

Getting the ball rolling on the green transition – how do we walk the thin line of implementation?

Camilla Sandström

Department of Political Science

Umeå University

Professor, Chairholder, UNESCO chair

on biosphere reserves as labs for inclusive societal transformation



unesco
Chair

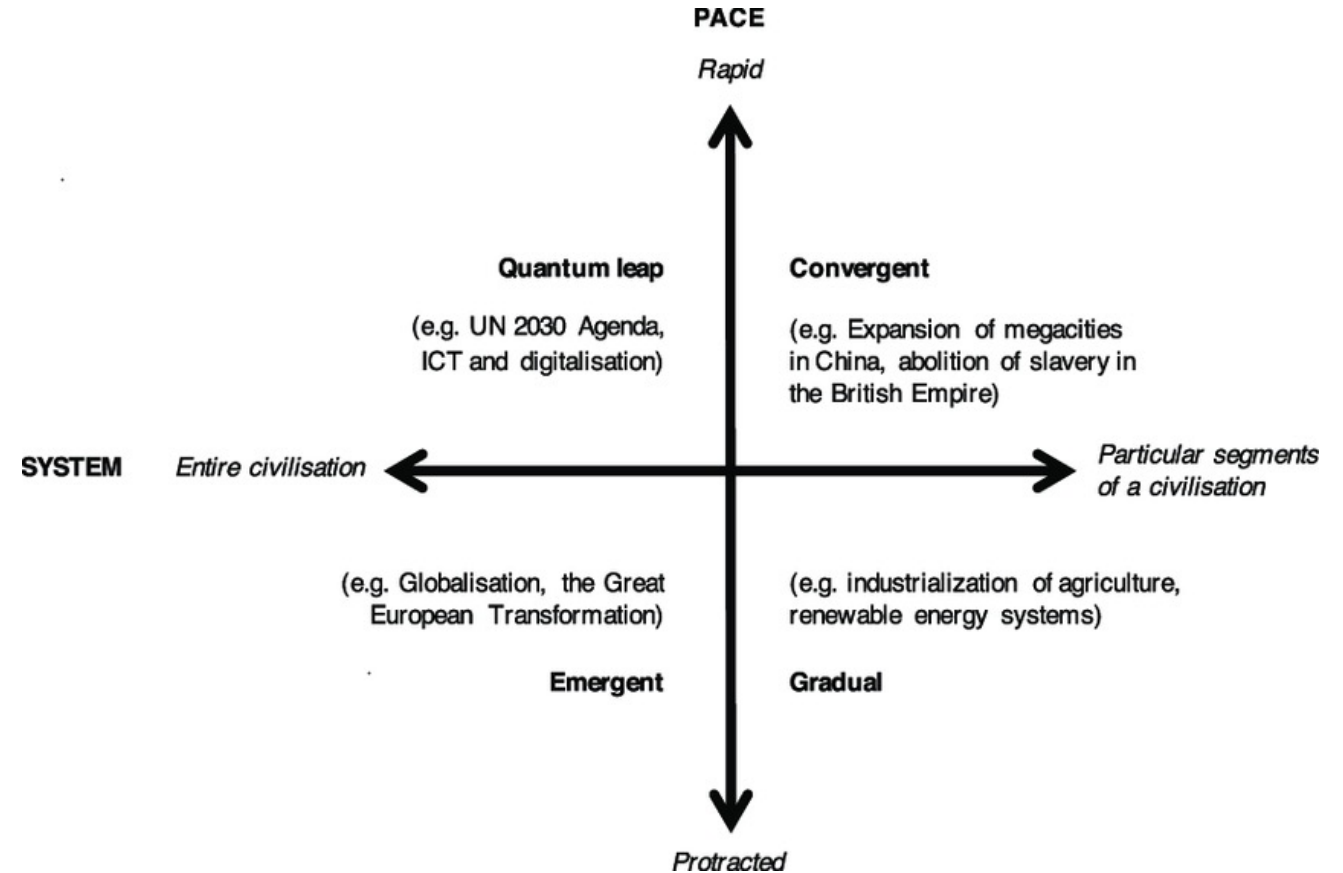
Transformative governance!



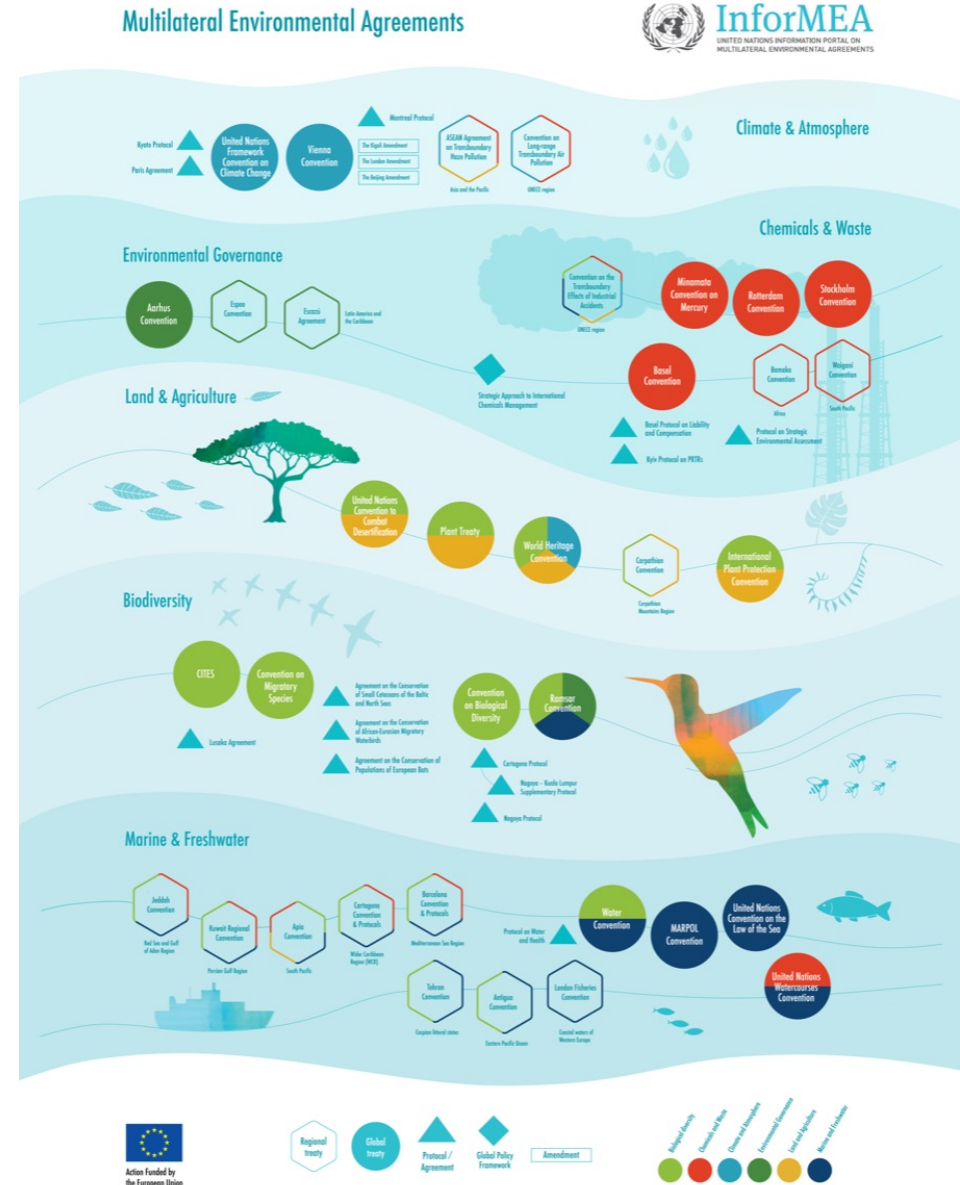
Variations in societal transformations

Transformation

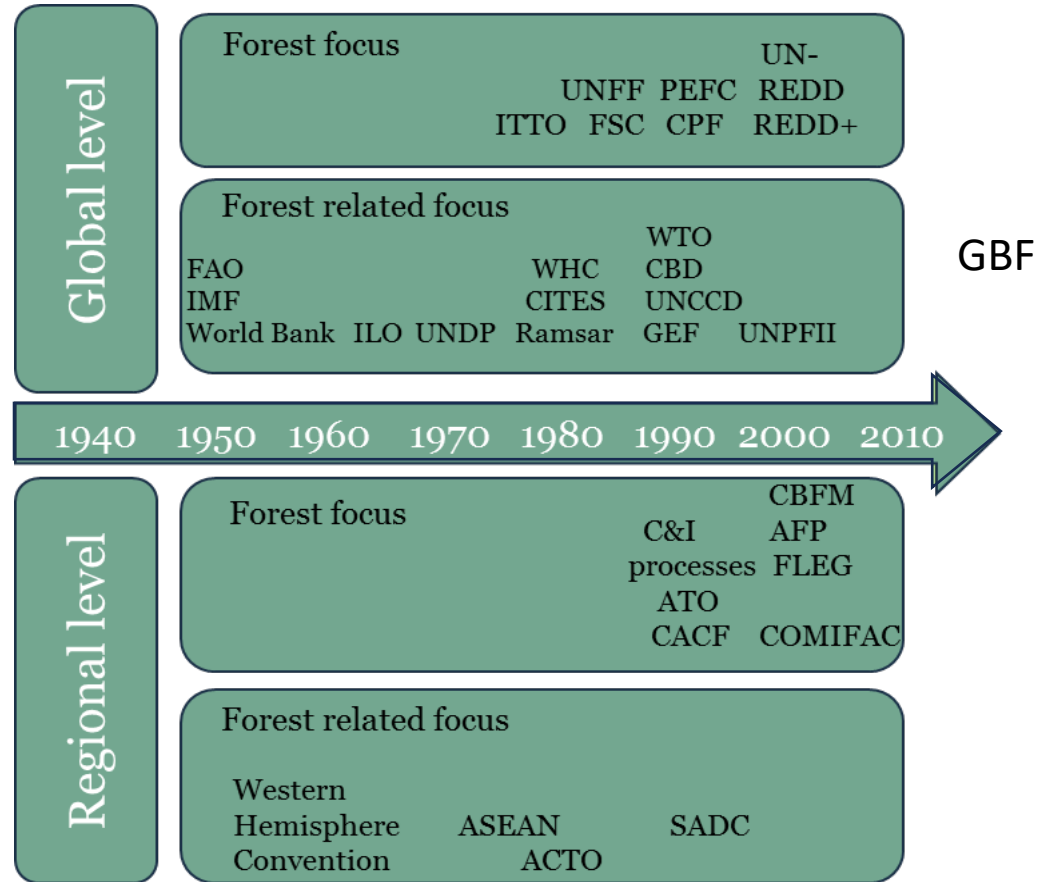
- Extensive change processes, can be abrupt, but often last for decades.
- Based on an identified need for change.
- Requires leadership, innovation, commitment, determination.
- Requires higher risk-taking, investment in legitimacy, new economic and social (power) structures.



> 40 Multilateral Environmental Agreements (MEAs) call for transformation



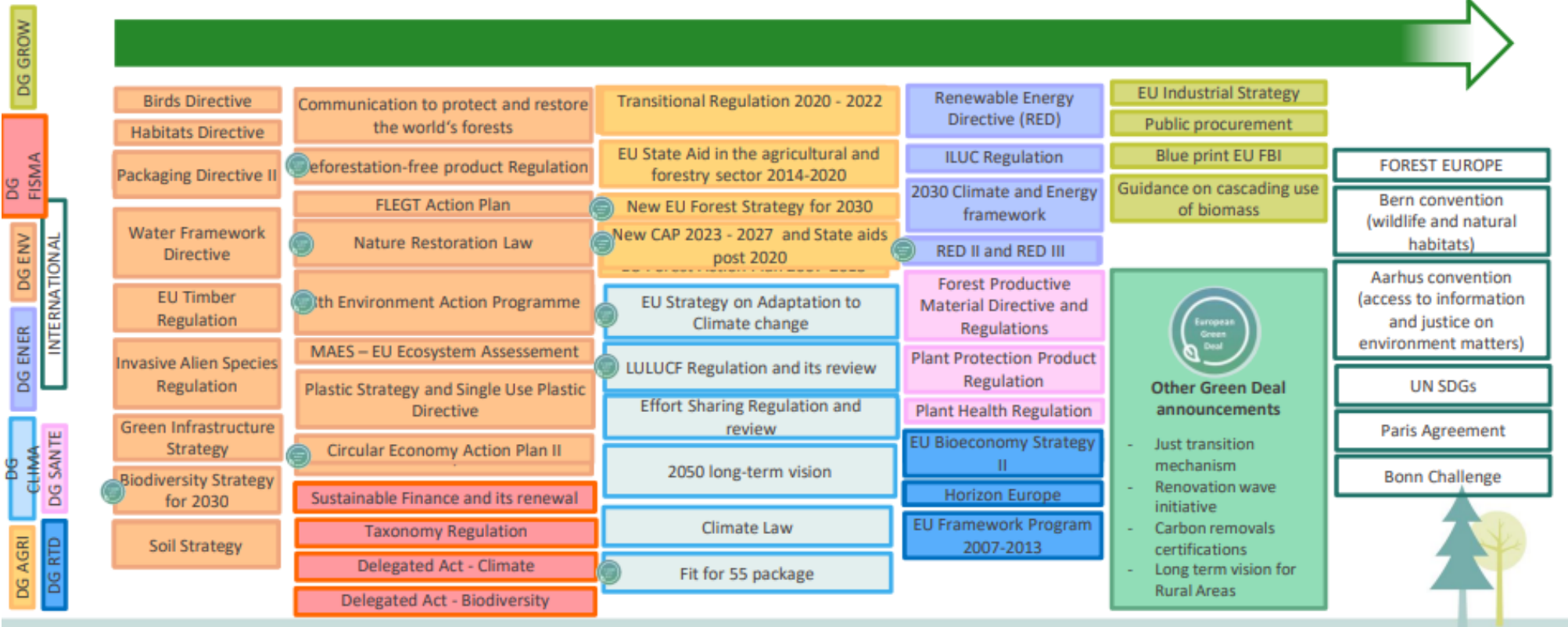
Global Forest-related policies



Fragmented global and regional governance with direct and indirect focus on forest and forest products

Focus on different ecosystem services

EU forest-related policies 1979-2023



The implementation deficit and potential solutions

Dilemma	Characteristics of the dilemma	Examples of solutions
Ambivalent goals	Difficulties in identifying common problem and proposing relevant solutions	Continuous and iterative deliberation Problem structuring methods
Uncertainty about cause-effect relationships	Lack of knowledge, unpredictable systems	Flexible institutions to allow for adaptation Living labs
Dispersed power of control	Sectorization, fragmentation	Joint decision-making network management (integration and mainstreaming)
Political myopia	Political decision-making fails to consider long term consequences of policy decisions	Acceptance of transition/transformation
Determination of short-term steps for long-term change	Lack of connection between short term action and long-term change	Dual strategies of foreseeing and back casting
Risk of lock in effects	Non-optimal solutions in the long-term perspective	Portfolio management

Thank you for your attention!



unesco

Chair